

Center corner Section 11, Township 12 North, Range 70 West

CERTIFIED LAND CORNER RECORDATION

DESCRIPTION OF CORNER EVIDENCE FOUND, AND ORIGINAL RECORD (If known)

Found new East - West and new North fence lines

DESCRIPTION OF MONUMENT AND ACCESSORIES ESTABLISHED TO PERPETUATE THE ORIGINAL LOCATION OF THIS CORNER:

Set a 5/8 inch copper rod with 1 1/2 inch copper cap stamped P.E. & L.S. 692

From corner to ties

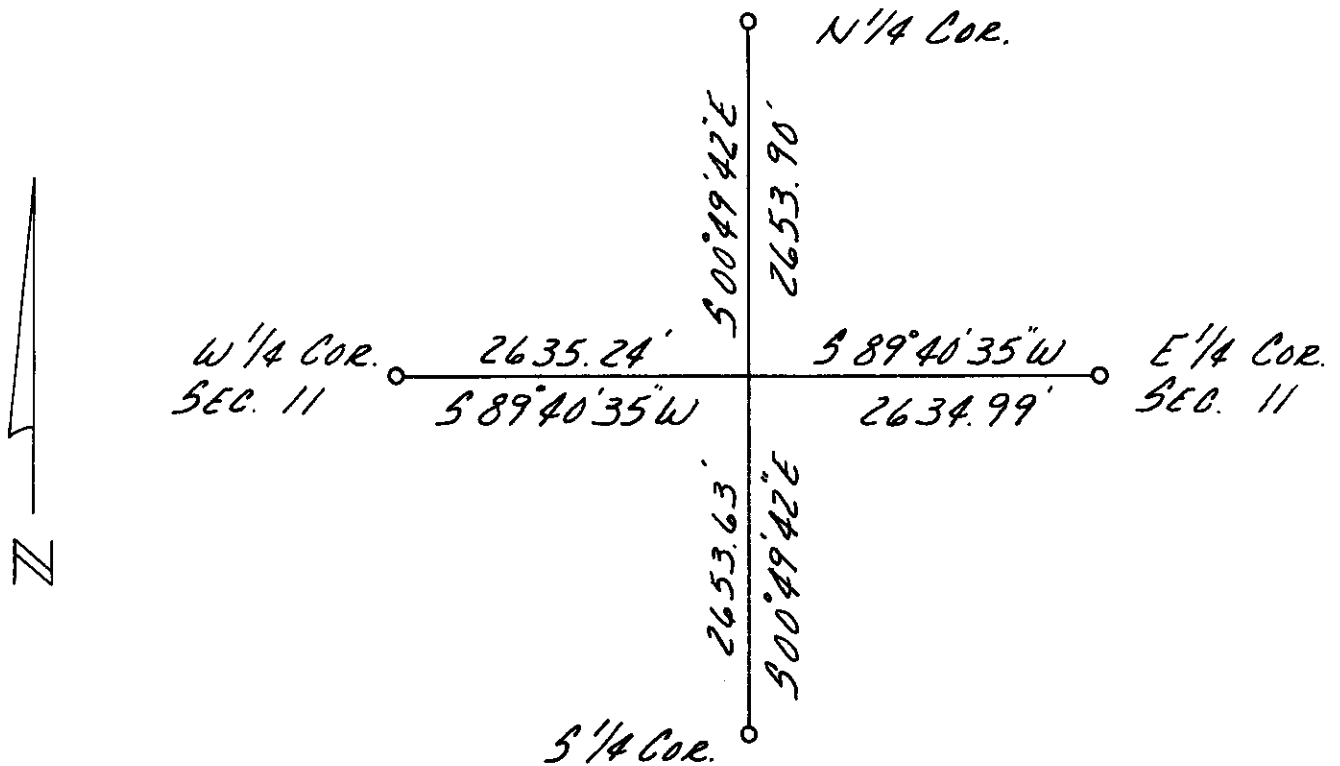
North Northwest 21.90 feet to nail and flagging in brace post

West 16.96 feet to nail and flagging in brace post

North 2.00 feet to fence line

SKETCH, WITH COURSE AND DISTANCE TO ADJACENT CORNER IF DETERMINED IN THIS SURVEY.

(May Sketch or Paste Reproduction on Reverse Side.)



I, Neil M. Kruback certify that I have carefully performed or reviewed the work done on the diagrammed corner as reported on this recordation form and approve the same.

Neil M. Kruback
Signature of Surveyor

692
Registration No.

STATE OF WYOMING,
Office of Clerk and Recorder,
County of Laramie

This "corner record" was filed for record on the 18 day of December, 19 73, was noted on the cross-index plat and is assigned page No. _____, in book No. _____.

John B. Husman
County Official

Cross Index No. <u>6-19</u>	T. <u>12 N</u>	R. <u>70 W 6th P.</u>	Mer.
_____	T. _____	R. _____	Mer.
_____	T. _____	R. _____	Mer.
_____	T. _____	R. _____	Mer.
_____	T. _____	R. _____	Mer.
_____	T. _____	R. _____	Mer.
_____	T. _____	R. _____	Mer.

Photographed ✓
Indexed ✓
Posted ✓
Assessor ✓

Photographed ✓
Indexed ✓
Posted ✓
Assessor ✓

The State of WYOMING } ss
County of LINCOLN }
This instrument was filed for record
at 11 27 o'clock A. M. on the
18 day of December
A. D. 19 73 and duly recorded in
Book _____ on page _____

[Signature]
County Clerk & Ex-Officio Register of Deeds
By *[Signature]* Deputy